



WIDEST ASIAN LEARNERS
ENGLISH SCHOOL

WALESPH

English Ver 2.1



WALESPH

www.walesph.com

BAGUIO



About

The average annual temperature in Baguio is 19.2 Celsius since the city is located above sea level. You can also experience an autumn-like climate which is conducive growth for moss, orchids, and pine trees. This is the place where air-condition is not necessary. Without the heat, students can concentrate more on their studies without soaking in sweat.

In addition, the city is named a creative city by UNESCO due to its breathtaking mountain views and home to several handwoven crafts from indigenous group and people embrace everyone with hospitality and warm smiles.

Safe City

The city government ensures a 24-hour police alert which makes the crime rate very low.

We have disciplined law enforcers, progressive safety programs and joint effort between the police and the community.

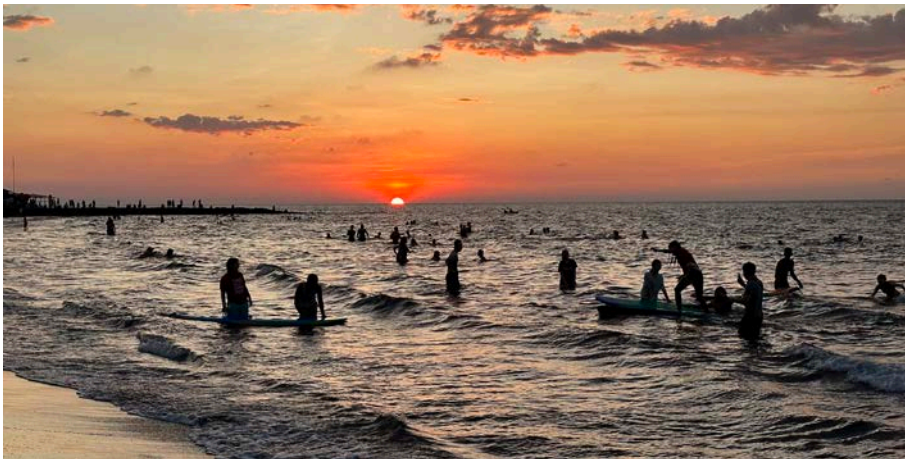
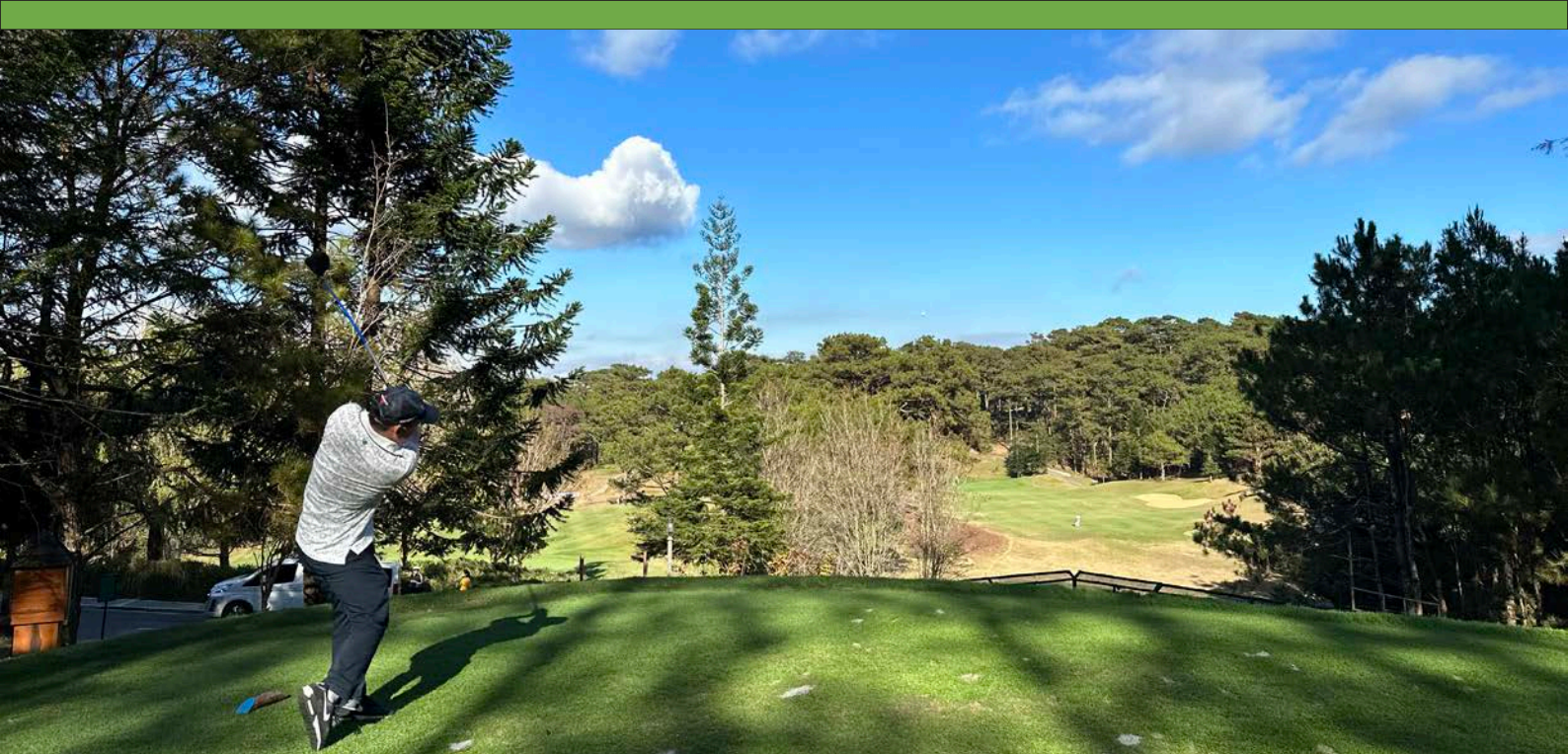
Moreover, police stations are strategically placed around tourist destinations and the central business district and have a monitoring network for foreigners.

Education City

Baguio has the best universities that belong to top universities in the Philippines which offer high quality education in all major disciplines. Also, it is one of the fun learning educational hub which equated learning with fun and dynamic interaction.

English is the standard medium of instruction and teachers are proficient and well-trained in the language.





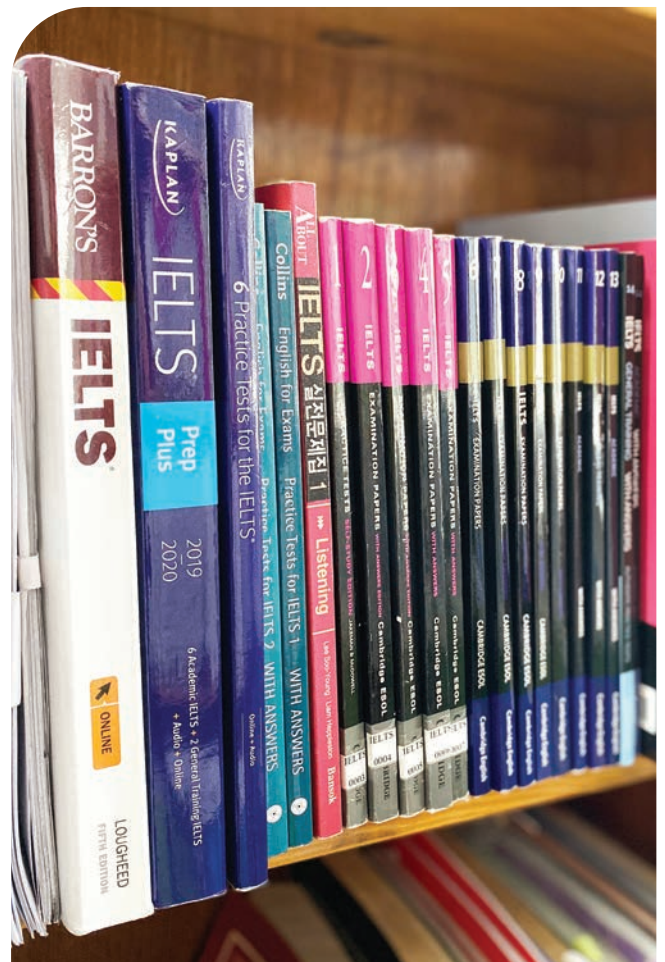
PROGRAM

WALES LEVELING SYSTEM

CEFR	A0	A1	A2	B1	B2		C1	C2	
WALES	Beginner A	Beginner B	Elem A	Elem B	Pre-Inter A	Pre-Inter B	Inter A	Inter B	Advanced
Academic	ESL ACHIEVERS			ESL ACHIEVERS					
				Business English					
				Academic IELTS					
				IELTS General Training					
GENERAL	EEP 1								
	EEP 2								
JUNIOR	Junior ESL Fundamental			Junior ESL Developmental			Junior ESL Intensive		
				Junior IELTS Developing			Junior IELTS Intensive		

DAILY SCHEDULE

Time	Subjects	Note
07:00 - 07:45	Breakfast	Breakfast Time 07:00 - 07:45 08:00 - 08:45
08:00 - 08:45	Breakfast / Class	1:1 or Group class
08:55 - 09:40	Class	1:1 or Group class
09:50 - 10:35	Class	1:1 or Group class
10:45 - 11:30	Class	1:1 or Group class
11:40 - 12:25	Lunch / Class	Lunch Time 11:30 - 12:30 12:30 - 13:20
12:35 - 13:20	Lunch / Class	1:1 or Group class
13:30 - 14:15	Class	1:1 or Group class
14:25 - 15:10	Class	1:1 or Group class
15:20 - 16:05	Class	1:1 or Group class
16:15 - 17:00	Class	1:1 or Group class
17:00 - 17:45	Class	1:1 or Group class
17:30 - 19:00	Dinner	Dinner
19:00 - 22:00	Self Study	



- **Course Description**

This course is designed to help learners improve their communication skills for everyday situation.

- **General Learning Outcomes**

Students will be able to express themselves confidently in different situations.

EEP1 (English Enhancement Program 1)

3 Classes 1:1

- **Everyday English** (Survival English)
(At the airport, hospital, supermarket etc.)
- **Speak-up**
(picture description, common slangs)
- **Active Listening**

0 Group Classes (6:1)

- No Group Classes

CLUSTER	SUBJECT	Descriptions
1:1	Everyday English	To familiarize students with various expressions used in specific situations.
	Speak-up	To help the students express their ideas and opinions in a free manner.
	Active Listening	Intended to help students practice listening to different conversations used in daily activities.

EEP2 (English Enhancement Program 2)

4 Classes 1:1

- **Conversations** (Role play activities)
- **Simple presentation** (Cooking, baking, how to make crafts etc.)
- **Active Listening**
- **Vocabulary Builder**

1 Group Classes (6:1)

- **Interactive Discussion**

CLUSTER	SUBJECT	Descriptions
1:1	Conversation	It develops the students' ability to engage in daily conversations.
	Simple Presentation	To build students' confidence in delivering simple presentations.
	Vocabulary Builder	The students will enhance lexical resource use in specific situations.
	Active Listening	Intended to help students practice listening to different conversations used in daily activities.
Group	Interactive Discussion	To help the students have a wider perspective and share their ideas with different general topics.

This program is designed for Language Learners who want to focus and excel in their English Studies for Academic purposes. In this program, assessment is provided to monitor students' progress.

A0	A1	A2	B1	B2		C1	C2	
Beginner A	Beginner B	Elem A	Elem B	Pre-Inter A	Pre-Inter B	Inter A	Inter B	Advanced
ESL FUNDAMENTAL			ESL DEVELOPMENTAL			ESL INTENSIVE		
8 Classes			8 Classes			8 Classes		
Group Class		Listening Vowels and Consonants Discussion	Group Class		Listening Stress and Intonation Discussion	Group Class		Listening Accent Training Debate
1:1		Speaking Writing Vocabulary Reading Grammar	1:1		Public Speaking Writing Speaking 1 Reading Grammar	1:1		Speaking (Research) Speaking (Presentation) Writing Pro Reading Mastery Grammar Pro
<ul style="list-style-type: none"> Students with CEFR level A0 - A2 Lecture Approach Guided Activities Foundational for Basic Language 			<ul style="list-style-type: none"> Students with CEFR level B1 - B2 Discussion Approach Interactive Activities Enhancement of student's oral and written communication 			<ul style="list-style-type: none"> Students with CEFR level C1 - C2 Supervision Approach Supervised presentations/ Activities Application of Language skills through variety of engaging subjects 		

ESL FUNDAMENTAL

- Students with **CEFR** levels **A0-A2**.
- This course is intended for acquiring and building skills.
- Three group classes: discussion, pronunciation, and listening for the acquisition of basic language skills in speaking and listening.
- Daily and weekly monitoring outcomes in all subject areas.
- End-term examination to assess students' progress.

5 Classes 1:1

- Speaking
- Writing
- Vocabulary
- Reading
- Grammar

3 Group ESL Classes (6:1)

- Listening
- Vowels and Consonants
- Discussion

End Term Exam

- Examination of the four Macro skills to assess the student's progress in a term.
- The exam is done last day of the term (Friday)

Outcomes recorded on the teacher's Course Outline

(Teachers' course outlines are being checked by the head teachers weekly)

- Daily exercises from the textbooks are given as a post-task activity to evaluate how far the student understood the lesson.
- Weekly test on Friday that is prepared by the subject teacher to check the student's retention of the information acquired or learned from Monday to Thursday. The subject teacher and the student will have a rationalization after.



ESL DEVELOPMENTAL

- Students with **CEFR** levels **B1-B2**.
- This course is intended to progress and enhance the acquired skills from the fundamental level.
- Three group classes: Extended opportunity for discussion, pronunciation, and listening on a variety of topics to develop language skills in speaking and listening.
- Daily and weekly monitoring outcomes in all subject areas.
- End-term examination to assess students' progress.

5 Classes 1:1

- Public Speaking
- Writing
- Speaking 1
- Reading
- Grammar

3 Group ESL Classes (6:1)

- Listening
- Stress and Intonation
- Discussion

End Term Exam

- Examination of the four Macro skills to assess the student's progress in a term.
- The exam is done last day of the term (Friday)

Outcomes recorded on the teacher's Course Outline

(Teachers' course outlines are being checked by the head teachers weekly)

- Daily exercises from the textbooks are given as a post-task activity to evaluate how far the student understood the lesson.
- Weekly test on Friday that is prepared by the subject teacher to check the student's retention of the information acquired or learned from Monday to Thursday. The subject teacher and the student will have a rationalization after.

ESL INTENSIVE

- Students with **CEFR** levels **C1-C2**.
- This course focuses on the application of language skills through a variety of engaging subjects.
- More intensive exercises were implemented to equip the students' skills.
- Three group classes: debate, accent, and News listening to engage students in authentic activities.
- Class presentations, journal making, and debates for the application of the skills acquired.
- End-term examination to assess students' progress.

5 Classes 1:1

- Speaking - 90mins (Research and Presentation)
- Writing Pro
- Reading Mastery
- Grammar Pro

3 Group ESL Classes (6:1)

- Listening
- Accent Training
- Debate

End Term Exam

- Examination of the four Macro skills to assess the student's progress in a term.
- The exam is done last day of the term (Friday)

Outcomes recorded on the teacher's Course Outline

(Teachers' course outlines are being checked by the head teachers weekly)

- Daily exercises from the textbooks are given as a post-task activity to evaluate how far the student understood the lesson.
- Bi-weekly giving of presentations and Research journals to monitor the student's output with the specific subject area.

- Students can target specific TOEIC score.
- Develop communicative skills in academic setting.
- Students written communication will be enhanced.
- Build foundational skills to improve the language skills in advanced level.

How does ESL aid in accomplishing TOEIC scores?

WALES ESL Subjects not only build foundational English Language skills but also help students to attain a good TOEIC score for employment purposes.

How can a student target a specific TOEIC score with the ESL Subjects?

- ESL books have the equivalence of a TOEIC-type test as shown in the table below.

	Listening	Reading
TOEIC QUESTION TYPES/TASK	<ul style="list-style-type: none"> • Photographs • Question-response • Conversations • Short Talks 	<ul style="list-style-type: none"> • Incomplete Sentences • Text Completion • Reading Comprehension
ESL BOOK EXERCISES	Listening Skills are presented in class. <ul style="list-style-type: none"> • Picture description • Dictation • Note-taking • Conversation • Short talks 	Reading Skills are presented in class. <ul style="list-style-type: none"> • Identifying Meaning from Context • Vocabulary and Reading Comprehension • Making inferences

- Audio is played **ONCE only** to develop their active listening skills whereas TOEIC is also played once.
- Students can change other subjects in ESL courses to focus on their goal wherein they can have 3 maximum classes for Reading and 2 maximum classes for listening.

How can you monitor the students' development in TOEIC?

- The ESL Entrance and End Term examination are TOEIC-type tests. Development is reflected on the End-term exam scores and progress chart.

CEFR	WALES	ESL	TOEIC
PROFICIENT	C2	Advanced	901-990
	C1	Upper Inter	
		Inter	
INDEPENDENT	B2	Pre-Inter B	701-900
		Pre-Inter A	
	B1	Elem B	501-700
BASIC	A2	Elem A	0-250
	A1	Beg B	
	A0	Beg A	





● **Purpose**

- » This program is designed for students who are employed in business companies who want to support their career advancement, individuals who are in search of employment and learners who want to expand their career prospects.
- » It is centered on language appropriate for its intended purpose and meet the specific needs of the learners to increase their knowledge of key business concepts worldwide.

● **COURSE DESCRIPTION**

- » This course provides learners with instructions and trainings which focuses on business contexts to allow them to effectively communicate with others whether in correspondence, face to face, meetings or online.

● **LEARNING OUTCOME**

- » Convey a systematic and complex mode of language
- » Develop confidence and basic skills to deal with people and basic issues in the business world
- » Identify differences and similarities between doing business in various countries
- » Improve communication with colleagues and employers
- » Increase the chances of landing an international career or boost international careers

CLUSTER	SUBJECT	Descriptions
Group Classes	Functional Business Correspondence and Contracts	<ul style="list-style-type: none"> Analyzing and evaluating business writing contexts Writing in a professional and competent tone Creating and reviewing agreements
	Article Reading	<ul style="list-style-type: none"> Reading a variety of business texts Developing prediction, skimming, and scanning skills Understanding meaning from context and taking notes on important information
	Listening	<ul style="list-style-type: none"> Following and understanding information from discussions, presentations, news reports, company visits and other business related situations Developing notetaking skills and identifying the attitude of speakers talking about different business concepts
1:1	Business Pitch (Presentation)	<ul style="list-style-type: none"> Making a purpose-led summary of key information about various business topics using visual aids to support ideas effectively Presenting facts and figures in a clear and interesting manner
	Biz Talk 1 (Business Talks)	<ul style="list-style-type: none"> Giving, justifying, and discussing own opinions on different business topics
	Biz Talk 2 (Patterns and Opinions)	<ul style="list-style-type: none"> Developing confidence, fluency and accuracy using various patterns necessary in business settings
	Vocabulary Builder	<ul style="list-style-type: none"> Introducing general business vocabularies Applying different terms in the business world



This program is designed to prepare students to take the IELTS official test with the essential skills and knowledge they need to attain their target band score.

It is recommended to study ESL fundamental for students who cannot attain the minimum assessment average band score of 3.0.

CEFR	A2	B1	B2	C1	C2
IELTS	3.0 - 3.5	4.0 - 5.5		6.0 - 9.0	
WALES	IELTS Starter	IELTS Developing		IELTS Intensive	
Requirement	Students should have a minimum assessment score of 3.0 to be accepted to the IELTS program	Students should have an assessment score of 4.0 - 5.5 .		Students should have an assessment score 6.0 and above .	

IELTS STARTER (3.0-3.5)

- Students with or without experience of the IELTS test who have 3.0 - 3.5 assessment band score.
- The curriculum focuses on the skills development and provides step-by-step exercises and guidance on the questions that appear in the IELTS test.
- Three Group ESL classes of discussion, pronunciation and listening to enhance the fundamental skills for ideal learning.
- Monitored self-study to build up vocabulary needed for IELTS.
- Mock IELTS conducted twice for each term to assess students.

5 Classes 1:1

- IELTS Listening
- IELTS Reading
- IELTS Speaking
- IELTS Writing
- IELTS Grammar

3 Group ESL Classes (6:1)

- Interactive Listening
- Accent Enhancement (Pronunciation)
- Group Discussion

Monitored self-study

Vocabulary Workbook

IELTS DEVELOPING (4.0-5.5)

- The curriculum focuses on the exercises to give students the opportunity to practice the skills, process the information and acquire strategies to help students in the IELTS test.
- Group class of conceptualization to develop and expand ideas for writing task 2. Also, a group class for the reinforcement of the application of grammar rules for IELTS writing and IELTS speaking.
- Monitored self-study to build up vocabulary needed for IELTS and written corrective feedback to identify specific errors in the student's written output.
- Mock IELTS conducted twice for each term to assess students.

5 Classes 1:1

- IELTS Listening
- IELTS Reading
- IELTS Speaking
- IELTS Writing 1
- IELTS Writing 2

2 Group Classes (6:1)

- Grammar
- Conceptualization

Monitored self-study

Vocabulary Workbook
Writing Workbook

IELTS INTENSIVE (6.0-9.0)

- The curriculum focuses on a more intensive practice to further enhance the student's skills.
- Group class of analysis to develop and expand ideas for writing task 2. Also, a group class for the reinforcement of the application of grammar rules for IELTS writing and IELTS speaking.
- Monitored self-study for writing and written corrective feedback is given to identify specific errors in the student's written output.
- Mock IELTS conducted twice for each term to assess students.

5 Classes 1:1

- IELTS Listening
- IELTS Reading
- IELTS Speaking
- IELTS Writing 1
- IELTS Writing 2

2 Group Classes (6:1)

- Grammar
- Analysis

Monitored self-study

Writing Workbook

MOCK TEST

2 times for each term (Middle and end of the term)

Middle of the term:

Speaking mock test is on Friday

The mock test for listening, reading, writing is on Saturday

End term:

The mock test for listening, reading, writing is on the last day of the term.

A0	A1	A2	B1	B2		C1	C2	
Beginner A	Beginner B	Elem A	Elem B	Pre-Inter A	Pre-Inter B	Inter A	Inter B	Advanced
Jr. ESL FUNDAMENTAL			Jr. ESL DEVELOPMENTAL			Jr. ESL INTENSIVE		
8 Classes			8 Classes			8 Classes		
Group Class		Listening Phonetics Grammar	Group Class		Listening Phonetics Grammar	Group Class		Listening Accent Grammar
1:1		Speaking 1 Speaking 2 Writing Vocabulary Reading	1:1		Speaking 1 Speaking 2 Writing Vocabulary Reading	1:1		Speaking 1 Speaking 2 Writing Vocabulary Reading
<ul style="list-style-type: none"> Students with CEFR level A0 - A2 Lecture and modeled Approach Guided and modeled Activities Foundational for Basic Language 			<ul style="list-style-type: none"> Students with CEFR level B1 - B2 Discussion Approach Interactive Activities Enhancement of student's oral and written communication 			<ul style="list-style-type: none"> Students with CEFR level C1 - C2 Supervision Approach Supervised Activities 		

JUNIOR FUNDAMENTAL

Course Description

The ESL Junior Fundamental is to provide students with the basic English skills needed for both school performance and everyday living.

General Learning Outcome

English Language Learners acquire academic language skills through the use of interactive instructional techniques.

CLUSTER	SUBJECT	Descriptions
Group Classes	Listening	To expose students to active listening skills.
	Phonetics	To get students to focus on specific sounds: vowels and consonants
	Grammar	To introduce students the parts of the speech, simple tenses at the introductory level
1:1	Speaking 1	To get students respond and practice the language with guided simple questions
	Speaking 2	It provides students additional speaking practice with different interactive activities
	Writing	To have students understand and write basic sentence structure and content in introductory level
	Reading	To have students understand and read basic sentences in introductory level
	Vocabulary	To introduce students to basic English vocabulary including greetings, family members, numbers, places in home, daily activities and etc.

JUNIOR DEVELOPMENTAL

- **Course Description**

The ESL Junior developmental is to develop students with the English language skills needed for both school performance and everyday living.

- **General Learning Outcome**

English Language Learners develop language acquisition and cognitive academic language skills through the use of strategic instructional techniques.

CLUSTER	SUBJECT	Descriptions
Group Classes	Listening	To develop students active listening skills.
	Phonetics	To get students to focus on sentence stress, intonation, blending and phrasing.
	Grammar	To understand higher forms of grammar structures
1:1	Speaking 1	It provides students practice of language items (vocabulary, grammar functions)
	Speaking 2	To develop students' conversational skills appropriate for mid- level grammar and vocabulary
	Writing	Intends to develop students writing skills in applying the mechanics of writing correctly
	Reading	Equips students with the necessary reading skills to enable them to comprehend academic texts
	Vocabulary	Aims to expand students' vocabulary appropriate to their level such as environmental conservation, technology, space exploration and etc.

JUNIOR INTENSIVE

- **Course Description**

The ESL Junior Intensive is to provide students with the higher English language skills needed for both school/ academic performance and everyday living.

- **General Learning Outcome**

Boost the learners' cognitive academic language competence that will enable the students to analyze and apply the acquired skills.

CLUSTER	SUBJECT	Descriptions
Group Classes	Listening	To help students practice advanced listening and note-taking skills.
	Accent	To help the student develop more fluid speech needed for academic purposes
	Grammar	To enhance students' knowledge in advanced grammar such as passive and active voice, gerunds, conditionals, clauses, and phrases.
1:1	Speaking 1	Aids students to elevate their ability to understand and talk about complex issues.
	Speaking 2	To enhance students' communication skills through mini research with presentation.
	Writing	Enhance students' skills in writing compositions.
	Reading	To help students understand ideas from information and facts that are not directly stated in a reading text.
	Vocabulary	Equips students to build a more advanced academic vocabulary.

Provide a channel for reinforcing the lessons learned in the classroom, offering students the opportunity to apply academic skills in a real-world context.

Activities	Descriptions
Vocabulary (Monday)	Varied vocabulary exercises such as antonyms and synonyms, word mapping and sentence construction that support students to improve all areas of communication – listening, speaking, reading, and writing.
Movie Viewing (Tuesday)	Specific movie is prepared for the age level with post task activities that provides source of authentic and varied language. It gives examples of English used in 'real' situations outside the classroom, particularly interactive language.
Reading (Wednesday)	Reading materials are provided such as authentic reading that aids students to develop their critical thinking skills
Presentations (Thursday)	Making and practicing of presentations. This will improve performance and at the same time help students master the language to communicate confidently
Writing & Physical Activity (Friday)	Writing Journals for learners to express their opinions and build sentences following the rules of the language. Physical activities for students to increase enjoyment and to enhance their social skills.

* Rules

1. Students must attend the everyday night class and participate in the activities since nobody is exempted.
2. Students are allowed to be absent only twice except for valid reasons. If not, students will be dropped from the night class.
3. Students' activities are divided based on the Age and English Level.
4. Students will have their own folders and score sheet for their output performance.
5. Students with big improvement will receive an award (certificates) not only for the academic result but also participation and attitude.

JUNIOR IELTS

This program is designed to prepare junior students to take the IELTS official test with the essential skills and knowledge they need in order to attain their target band score. It is recommended to study ESL fundamental for students who cannot attain the minimum assessment average band score of **4.0**.

CEFR	B1	B2	C1	C2
IELTS	4.0 - 5.5		6.0 - 9.0	
WALES	IELTS Developing		IELTS Intensive	
Requirement	Students should have an assessment score of 4.0 - 5.5 .		Students should have an assessment score 6.0 and above .	

IELTS DEVELOPING (4.0-5.5)

- The curriculum focuses on the exercises to give students the opportunity to practice the skills, process the information and acquire strategies to help students in the IELTS test.
- Group class of conceptualization to develop and expand ideas for writing task 2. Also, a group class for the reinforcement of the application of grammar rules for IELTS writing and IELTS speaking.
- Monitored self-study to build up vocabulary needed for IELTS and written corrective feedback to identify specific errors in the student's written output.
- Mock IELTS conducted twice for each term to assess students.

5 Classes 1:1

- IELTS Listening
- IELTS Reading
- IELTS Speaking
- IELTS Writing 1
- IELTS Writing 2

2 Group Classes (6:1)

- Grammar
- Conceptualization

Monitored self-study

Vocabulary Workbook
Writing Workbook

IELTS INTENSIVE (6.0-9.0)

- The curriculum focuses on a more intensive practice to further enhance the student's skills.
- Group class of analysis to develop and expand ideas for writing task 2. Also, a group class for the reinforcement of the application of grammar rules for IELTS writing and IELTS speaking.
- Monitored self-study for writing and written corrective feedback is given to identify specific errors in the student's written output.
- Mock IELTS conducted twice for each term to assess students.

5 Classes 1:1

- IELTS Listening
- IELTS Reading
- IELTS Speaking
- IELTS Writing 1
- IELTS Writing 2

2 Group Classes (6:1)

- Grammar
- Analysis

Monitored self-study

Writing Workbook

MOCK TEST

2 times for each term (Middle and end of the term)

Middle of the term:

Speaking mock test is on Friday

The mock test for listening, reading, writing is on Saturday

End term:

The mock test for listening, reading, writing is on the last day of the term.



Family program is a beneficial and enjoyable program where families can learn English together while experiencing Filipino culture and natural environment. Parents can live with their children and receive tailored English classes from local professional teachers to improve their English skills.

On weekends, families can enjoy various activities that allow them to experience local culture and natural environment, which will broaden everyone's experiences and perspectives.

FAQ

Q: Is guardian or nanny service available?

A: We do not provide this service. Junior students at Wales Language Academy must be accompanied by their parents or guardians.

Q: Can junior students travel alone for study in WALES?

A: We do not offer junior camp programs or solo junior programs.

Q: Are activity services available at the academy?

A: We do not provide activity services separately, but we can offer guidance on travel destinations and activities.

Q: Is it mandatory for parents or guardians to enroll in language classes?

A: Starting from 2023, students who do not attend language classes at the academy cannot use the dormitory.

Q: Is cooking possible at the dormitory?

A: Basic cooking is available at all dormitories except for studio type. However, frying pans and pots are not provided by the academy.

Q: What is the age limit for junior and for traveling alone?

A: Junior program is for students under 15 years old, and students who are 15 years old or older can enter and exit the country alone.

Q: Can students under 15 years old apply for adult programs?

A: Students under 15 years old can only apply for junior programs.



PINEWOOD GOLF COURSE

Use Golf Voucher

- Green Fee Voucher: 1,000pesos
- Cart Fee + Insurance: 1,100pesos
- Caddie Fee: 500pesos

TWILIGHT SPECIAL

- Green Fee + Cart Fee : 1,050pesos
- Caddie Fee : 500pesos
- After 12:30 (Not valid during Holidays and Weekends)

Campjohnhay Golf Course

Without member accompanying

- Green fee : 3,260pesos (weekday)
4,260pesos (weekend)
- Cart Fee: 850pesos
- Caddie Fee: 600pesos

The above price list is subject to change without notice.
Please use it as a reference only.



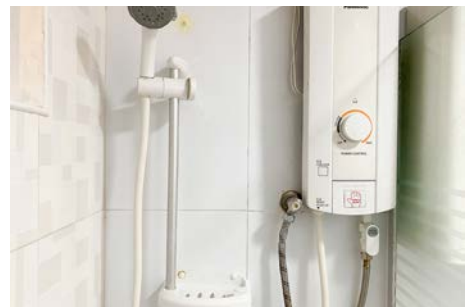
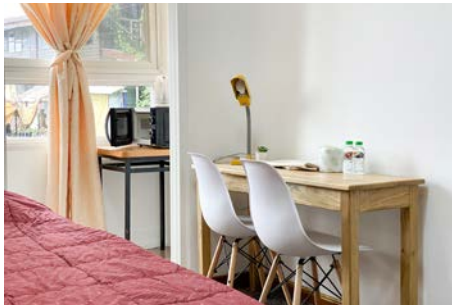
FACILITY



CLASSROOM



DORMITORY_ STUDIO TYPE

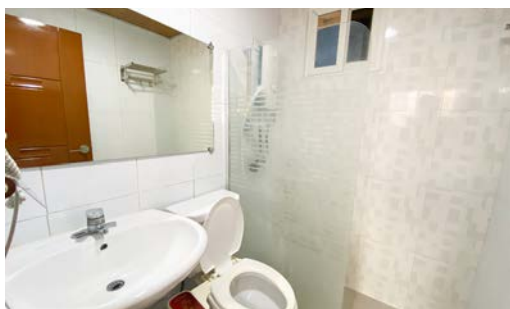
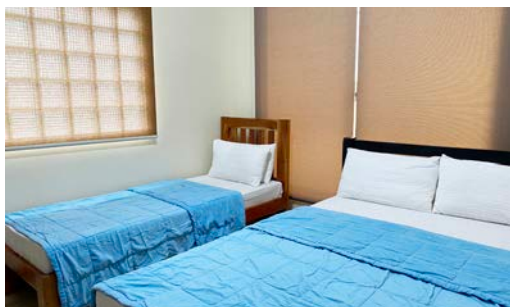


- **Share Type :**
Single or Twin Share

- **Amenities :**
Refrigerator, Electric Kettle, Microwave oven
Hair Dryer, Bidet
WIFI provide : 60Mbps

Balcony	
Room 1	
Toilet	

DORMITORY _ PREMIUM STUDIO TYPE



- **Share Type :**

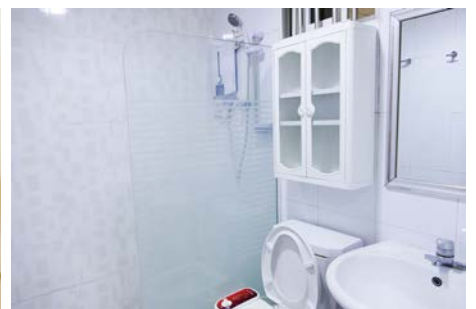
Single or Twin, Triple Share

- **Amenities :**

Refrigerator, Electric Kettle, Microwave oven, Induction Cooker, LED TV with Netflix
Hair Dryer, Bidet
WIFI provide : 60Mbps



DORMITORY _ SHARE TYPE



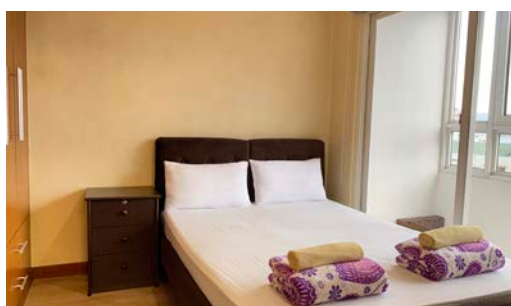
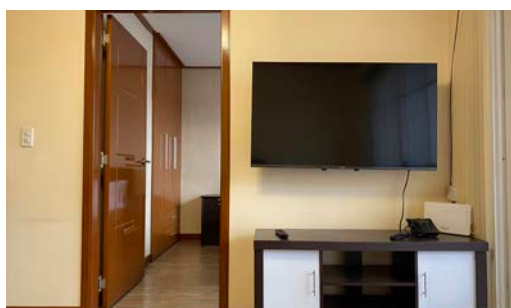
- **Share Type :**
Single or Twin Share

- **Amenities :**
Refrigerator, Electric Kettle, Microwave oven, Gas Stove,
LED TV with Netflix
Hair Dryer, Bidet

WIFI provide : 300Mbps



DORMITORY _ CONDO TYPE



- **Share Type :**

Semi Single, Family (Max 4pax)

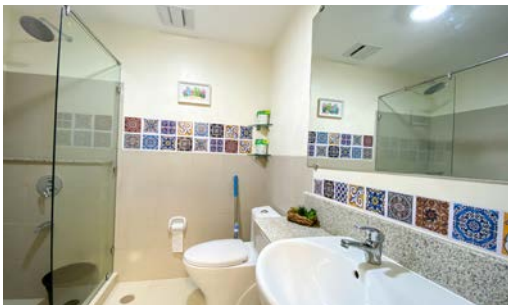
- **Amenities :**

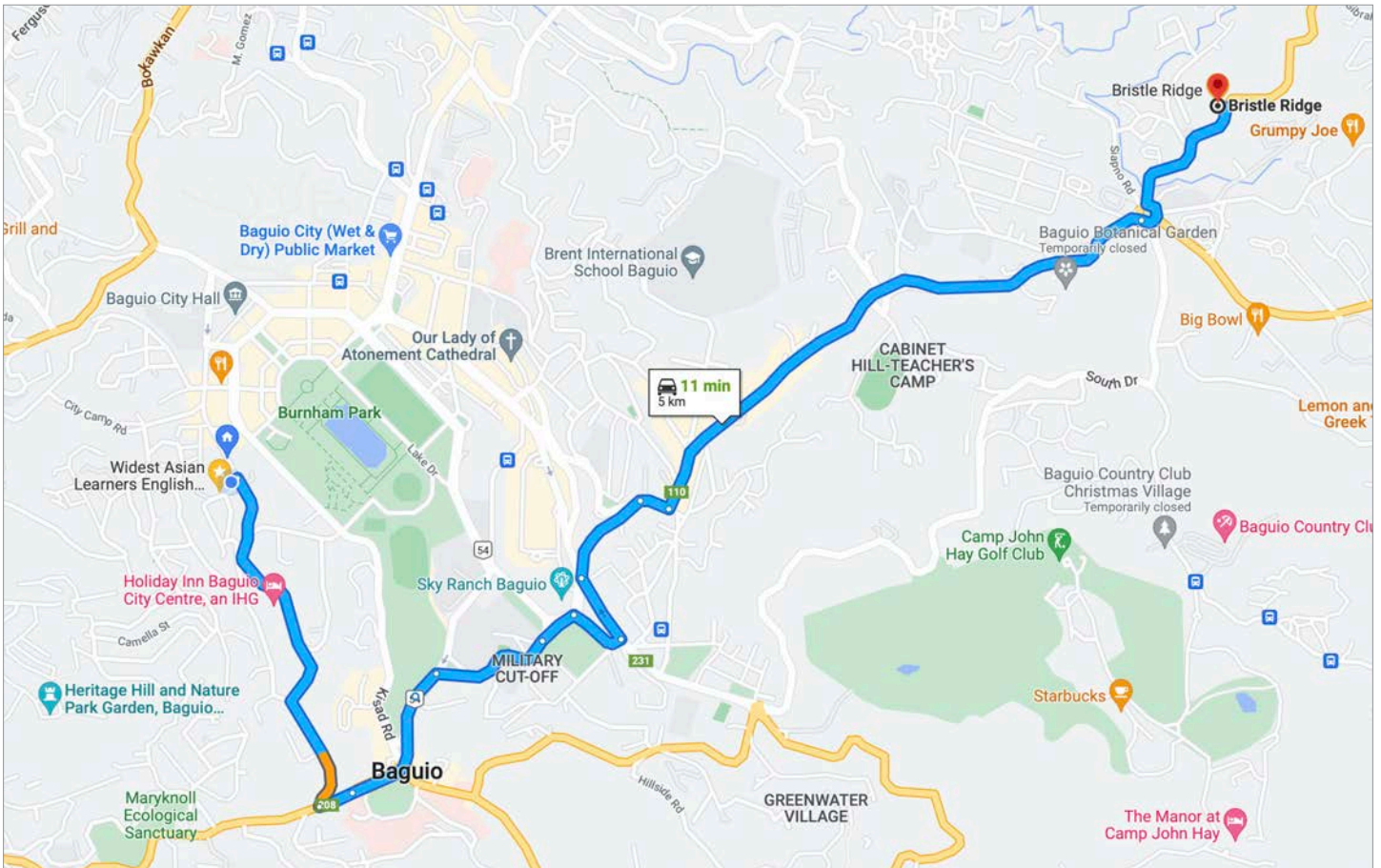
Refrigerator, Electric Kettle, Microwave oven, Gas range,
LED TV with Netflix
Hair Dryer, Bidet

WIFI provide : 300Mbps



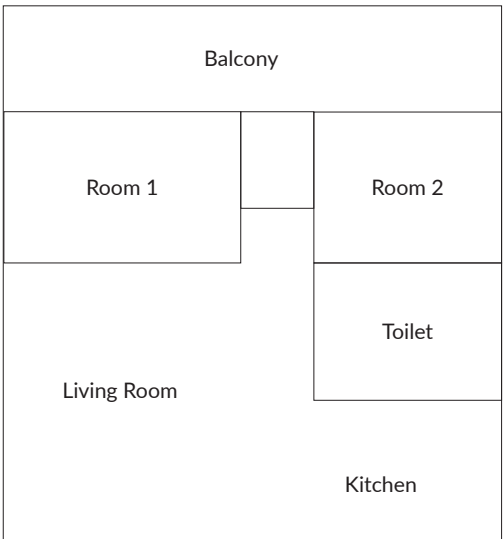
DORMITORY _ PREMIUM CONDO TYPE





- **Share Type :**
Semi Single or Family (4Pax)
- **Amenities :**
Refrigerator, Electric Kettle, Microwave oven, Induction Stove,
LED TV with Netflix
Hair Dryer, Bidet
Centralized Boiler

WIFI provide : 300Mbps



TESTIMONIALS

[Business] Afraid of Presentation/ Oliver

My name is Kaung Htet Soe. I'm from Myanmar, I studied Business English here. I stayed here for 4 weeks. Why did I choose WALES? First, it's because of its location. The location is very near the town so you can just walk around going to Session Road or SM. You don't need to ride a jeepney or taxi. You can just walk around going to town for 10 minutes, so that's a good thing. The second thing is because of the teachers, all the teachers here have a lot of experience. They are very good at teaching so that's why I chose WALES.

They have a dormitory so you can stay in the school. You don't need to go outside and rent a house or maybe stay in hotel or motel so you can stay in the school and just focus on your study. And because of

the weather, almost everyone is thinking that Philippines is very hot. Not really, the weather in Baguio is cool and very nice. In my classes, I have a lot of outputs. Like for example, I'm taking Business English, I must make a presentation, so I must make a lot of output in this presentation. I did a great job in my presentation.

Also, I learned how to write a contract, how to rent a house, how to deal with a landlord or a tenant. They will also teach you how to make a resume. For that 1 month that I stayed, I would say that I improved. Before I came here, I'm afraid to talk with other people, I'm afraid to talk in public. But right now, after my presentation, after 4 weeks of studying here I can speak in public. I'm not afraid anymore. I can communicate with other people from different countries. So yeah, I think my English improved. I would really recommend WALES, if you're planning to study English come to WALES and study here. They have a lot of programs like IELTS, TOEIC, ESL and Business English. So, I strongly recommend for you to come here and study.



[ESL -> IELTS] Foundational ESL to IELTS/ Luke



Hi! I'm Luke. I'm from Taiwan. Before coming to study here in WALES, I planned to study English for six months - three months to study ESL and the remaining three months to study IELTS. It was a great decision for me because it helped me a lot to achieve my goal. Currently, I am studying IELTS within the next three months. I already studied ESL these past three months. When I first started studying in WALES, my level was Beginner B. At the end of three months of studying ESL, my level improved to Pre-intermediate A which passed the required level to study IELTS. I was so happy about my improvement.

Now that I am studying IELTS I realized that for the IELTS program, when you have a good foundation of the English language, it will help you a lot to study

IELTS. In IELTS, we are learning the skills and application of the basic knowledge. So, for beginner students who want to study IELTS, my suggestion is to study ESL first to have the basic English knowledge for advanced programs like IELTS.

[IELTS]From 4.0 to 6.5 within 4 months!!!! / NIKITA

The reason why I study English, specifically IELTS is I will study in Canada. I really appreciate all of my teachers and school staffs, they help me out a lot. After studied here, I realized that I'm more mature than before, I can make my own decision. In WALES, teachers are very enthusiastic and friendly, not only as my teachers but also as my friends. Beside that, our Vietnamese manager encourages me to study everyday.

Improved 2.5!!!!

After studied for 4 months, from IELTS 4.0, I can improve my score to 6.5, especially my speaking has significantly improved. In the first month, my English didn't improve much. However, in the 4th month it's significantly improved.



- **Entrance test :** Band score 4.0 (Listening : 3.5 / Reading : 5.0 / Writing : 2.0 / Speaking : 4.5)
- **After 4 months :** Band score 5.5 (Listening : 6.5 / Reading : 4.5 / Writing : 5.5 / Speaking : 6.0)
- **Official test :** Band score 6.5 (Listening : 7.0 / Reading : 5.5 / Writing : 6.0 / Speaking : 7.0)

No need to force yourself to study...?!

WALES is not Sparta system, we are allowed to go out after class, but also thanks to that, I can study more relax and study more comfortable

My room was very clean, Wi-Fi connection also stable, food are not as good as Vietnamese food but it's okay, chefs cook variety of food for every meals. The only problem was that my skin got more dry because of the weather.

My agent recommended me to study in WALES, overall I'm very satisfied with her recommendation. If you want to study in this homey ambience and effectively, you should come to WALES to study. If I have chance to go Baguio, definitely I'll come visit WALES.

[IELTS]Improved writing skill 1.5~6.5 within 2 months / TRANG



I came here to study with my best friend though the recommendation from my agent. We were studying in Russia but we want to change the environment, so after studied English here, we'll go study at university in Canada.

Study English in Philippines, especially WALES made me become more mature, think more about my action. I made a lot of friends here, from different nationalities, so it's very good chance for me to practice speaking English outside class, but we don't keep in touch much after we graduated since we are busy with our own things. However, teachers and staffs in WALES are friendly and enthusiastic, they helped me a lot.

During entrance exam, my writing score was only 1.5, I got really sad, I couldn't believe that I got such a low score, but I took mock test again after 2 months and my score has improved to 6.5.

Therefore, in my opinions, it's better to choose school like WALES, not so strict, not so stressful, you have more time to relax and explore the Philippines while studying here. I'm very satisfied with everything in school, I've enjoyed a lot.

If you want to improve your IELTS score in short time and also want to study in not so pressure atmosphere then you should come to WALES to study. I bet you won't regret your decision.

AROUND SCHOOL



SM mall and Burnham Park

Baguio SM is a shopping mall located in the city of Baguio in the Philippines. It is part of the SM Supermalls chain, which is the largest shopping mall operator in the Philippines. Baguio SM offers a wide range of retail shops, restaurants, and entertainment options, as well as a supermarket, department store, and cinema.

Burnham Park is a popular park in Baguio City, Philippines. It's a beautiful place with lots of different things to do. You can see pretty flowers in the Rose Garden, learn about local culture in the Igorot Garden, and play sports or watch concerts in the Athletic Bowl. Kids can have fun at the Children's Park and Skating Rink. You can also rent bikes or paddle boats to explore the park. Many people enjoy walking along the park's paths. If you're in Baguio, you should visit Burnham Park!

Fast Food Franchise

WALES Academy, located in a bustling neighborhood, offers students easy access to various food options. Within just a 5-minute walking distance from the academy, there are numerous popular franchise restaurants such as Jollibee, McDonald's, Chowking, Inasal, and more.

These fast-food restaurants are convenient options for students who want to grab a quick bite to eat between classes or during breaks. They offer a variety of meal options at affordable prices, making it easy for students to satisfy their hunger without breaking the bank. Having a variety of food options close to the academy is an advantage for students, giving them the freedom to choose their preferred meal while also saving them time and money.



Grocery

Within walking distance from the academy, there are several grocery stores, including Seven Eleven, Korean Grocery, Asian Mart, and Japanese Import Products. One of the largest grocery stores in the area is Pure Gold, offering a wide selection of products.

Having several grocery options near the academy is a convenient advantage for students who may not have access to transportation or prefer to shop on foot. These stores offer affordable prices, and students can take advantage of the various products and items available. Overall, students can take advantage of the convenient location of these grocery stores and shops, allowing them to purchase what they need to make their time at the academy more comfortable and enjoyable.

Altitude Gym

Altitude Gym is a fitness facility that offers a variety of classes, including kickboxing. Led by experienced instructors, these classes provide a challenging and fun full-body workout that can improve physical fitness and mental wellbeing. Participants of all skill levels are welcome, and the gym provides a safe and supportive environment to help achieve their fitness goals.





Cafe by the ruins

Cafe by the Ruins was rebuilt into a romantic, modern cafe, reclaiming its title as one of the best coffee shops in Baguio. A visit to this iconic cafe is not complete without trying their signature Ruins Coffee infused with cinnamon and cardamom that's sure to uplift your mood. Plus, you can take home-baked pastries like Luisa's Ensaymada and Ernie's Camote Bread that are sure to be a hit with the family!

Starbucks, Heritage Mansion

Starbucks coffee shop in Heritage Mansion is a popular destination for tourists and locals in Baguio City. It is located near WALES academy and is only a 5-minute walk away. Heritage Mansion is a historic building that has been transformed into a commercial complex, and Starbucks is one of the most well-known establishments located inside. Visitors can enjoy a variety of coffee and tea drinks, as well as a selection of snacks and pastries.



Foam Coffee

If you're visiting WALES and looking for a nearby coffee shop, you're in luck! Foam Coffee is just a short 5-minute walk away from WALES Academy.

This means that you can easily take a quick break from your studies or activities and enjoy a delicious cup of coffee or a non-caffeinated beverage at Foam Coffee. We recommend trying their signature latte with its frothy foam or enjoying one of their premium donuts from Glazed Artisan Donuts.

Canto

Their best seller is the Lomo Ribs, a grilled pork ribs marinated with homemade barbecue sauce. They usually partner this dish with a salad and mashed potato.

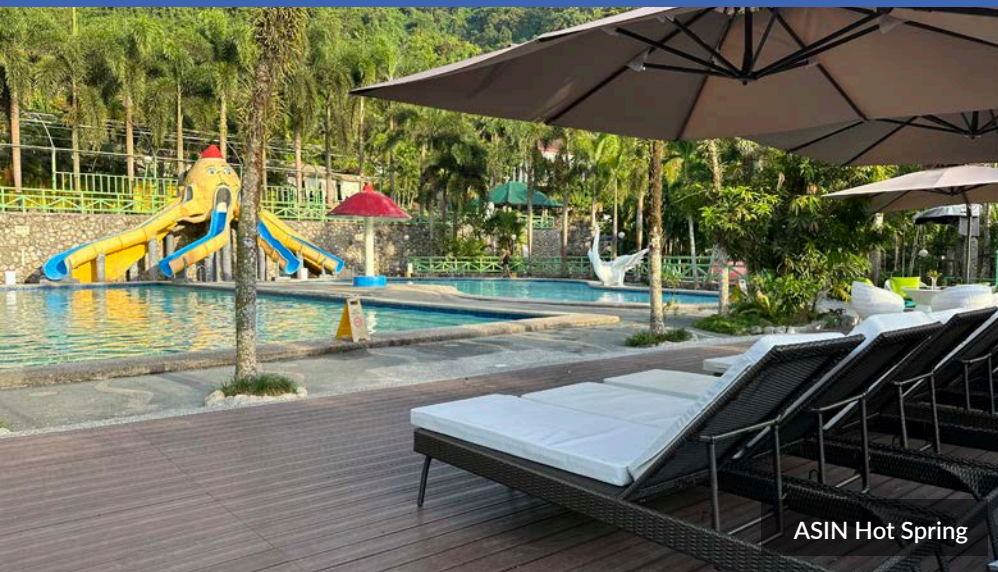
As expected, Canto's best-selling grilled lomo ribs never disappoint. It's juicy, tender, and that barbecue sauce adds a flavorful explosion inside my mouth. The mash potato is also creamy! Baguio is also known for its freshest vegetables so you'll also taste the freshest salad here in Canto. All I can say, that 15-20 minutes queuing time is worth the wait!



Session Road

Session Road is a popular destination in Baguio City, Philippines. On Sundays, it's bustling with activity, including chalk art, buskers, cosplayers, and stalls selling a range of products. It's a great place to take a leisurely walk and explore the city's vibrant atmosphere, sample local cuisine, and interact with friendly locals. As one of UNESCO's creative cities, Baguio City is known for its rich cultural heritage, natural beauty, and creative energy, making it a must-visit destination for anyone looking to experience the best of the Philippines.

ACTIVITIES



ASIN Hot Spring



Kultra splash Island



Mt. Kalugong



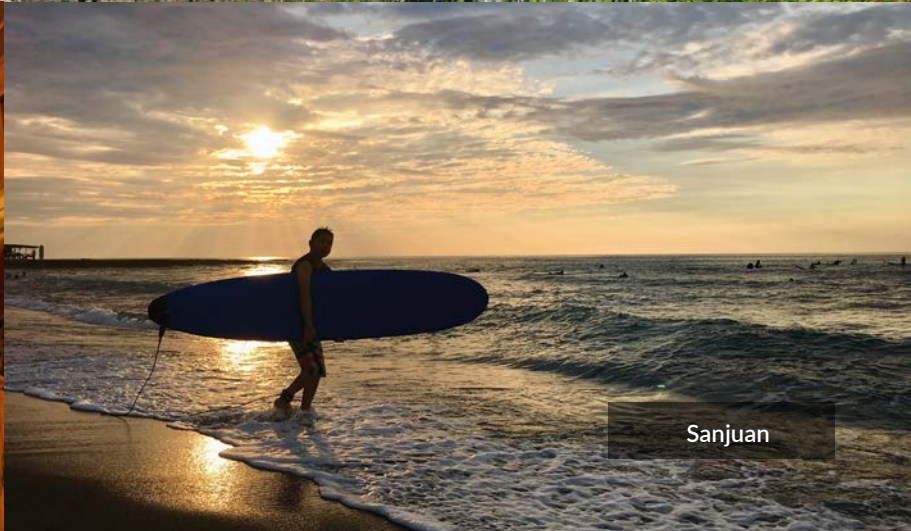
Ambuklao Dam



Vigan



Vigan



San Juan



SanJuan



Hundred Island



SanJuan



Thunderbird Resort

WALEs

*With our focus on Wisdom, Ability, Leadership, Excellence, and Spirit,
WALEs Academy is dedicated to helping you achieve your full potential.*

